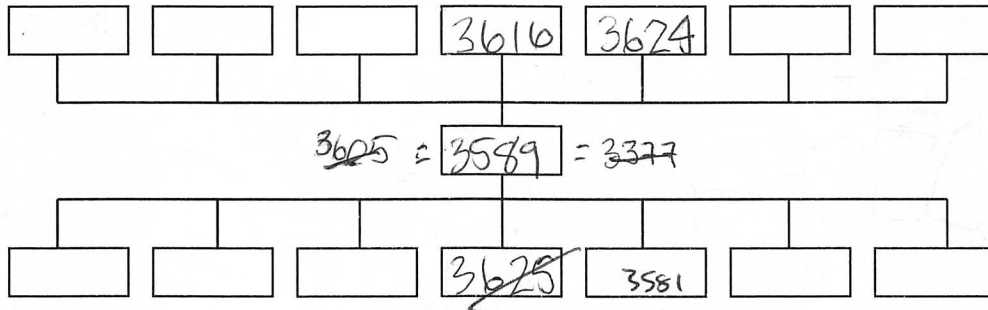


Site Code: MNO12	Location: C	Grid Sq: 145-210.	Context Type: MASONRY	Context Number: 3589
1. Materials	1. PURPLISH RED, ORANGE RED + YELLOW.			
2. Size of materials (brick: BTL in mm)	2. 950 x 70 x 230, 100 x 60 x 230, 110 x 70 x 230.			
3. Finish of stones	3. -			
4. Coursing / bond	4. SINGLE WIDTH HEADERS EITHER SIDE OF VOID TOPPED WITH HEADERS			
5. Form	5. NO BUILT DRAIN ON END FLAT AT NORTH END TO MEET W			
6. Direction of face(s)	6. INBUILT DRAIN WITHIN WALL [3581], ARCHED AT SOUTH END			
7. Surface treatment	7. TRUNCATION - BASE OF FLAT/TILE.			
8. Bonding material (if brick: record height of 4 courses & 4 bed joints in m)	8. BRICK LINED DRAIN PEG			
9. Dimensions of masonry as found	9. INTERNAL FACES E+W.			
10. Other comments	10. 860mm N/S x 550mm E/W x 430mm DEPTH.			
	10. DRAIN BUILT IN TO WALL [3581] AS PART OF CONSTRUCTION.			
	- RENDERED OUT OF USE BY LATER STONEWARE DRAIN CONSTRUCTION			
	SEALED BY [3534], AND TRUNCATED SOUTH BY DRAIN CUT			
	[3381]			
	8. 110 - SEE BELOW.			
	Max Level:	m OD		
	Min Level:	m OD		

Stratigraphic Relationships:



Physical Relationships:

Abuts: 3581	Abutted by:
Cut by:	

Interpretation:	internal	external
	BRICK-LINED DRAIN IN SOUTH WALL OF [3581] SILT TRAP	
	SOUTH OF BUILT IN DRAIN.	
	8. VERY SOFT YELLOW SANDY MORTAR W OCC CHARCOAL FLECKS	
	4 COURSES = 290mm	
Context same as:		

Sample No(s): 2 BRICKS ^{PEG} _{TILE}	Drawing No(s): 3589 (x1)
Photo No(s): 6659-59	Sketch/levels overleaf: <input type="checkbox"/> Transferred to plan: <input type="checkbox"/>

Compiled by: NA	Date: 3/6/15	Checked by: asl.olis	Tick when entered in database: <input type="checkbox"/>
---------------------------	------------------------	--------------------------------	---

Context Number:
3589

Level No.s 1-13
TBM 11.40
B/S 0.85
IH 12.25

Level No.s 14-15
TBM 11.40
B/S 0.84
IH 12.24

Level No.s
TBM
B/S
IH

Level No.s
TBM
B/S
IH

No.	F/S	R/L (m OD)	No.	F/S	R/L (m OD)	No.	F/S	R/L (m OD)	No.	F/S	R/L (m OD)
1	1.53	10.72	6	1.65	10.60	11	1.48	10.77	16	1.97	10.27
2	1.61	10.64	7	1.71	10.54	12	1.54	10.71			
3	1.59	10.66	8	1.98	10.27	13	1.59	10.66			
4	1.57	10.68	9	2.00	10.25	14	1.92	10.32			
5	1.65	10.60	10	1.42	10.83	15	2.00	10.24			

