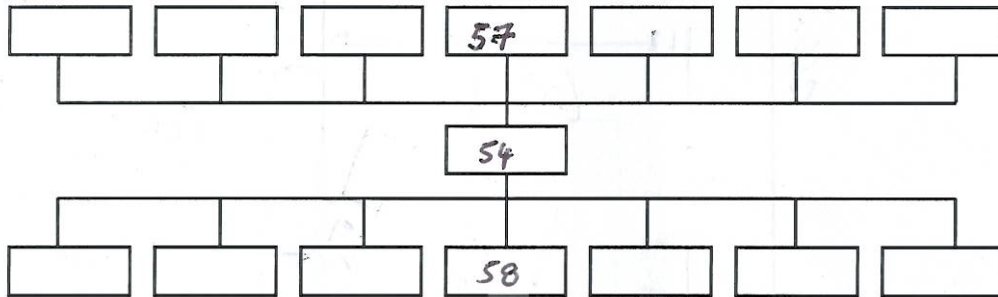


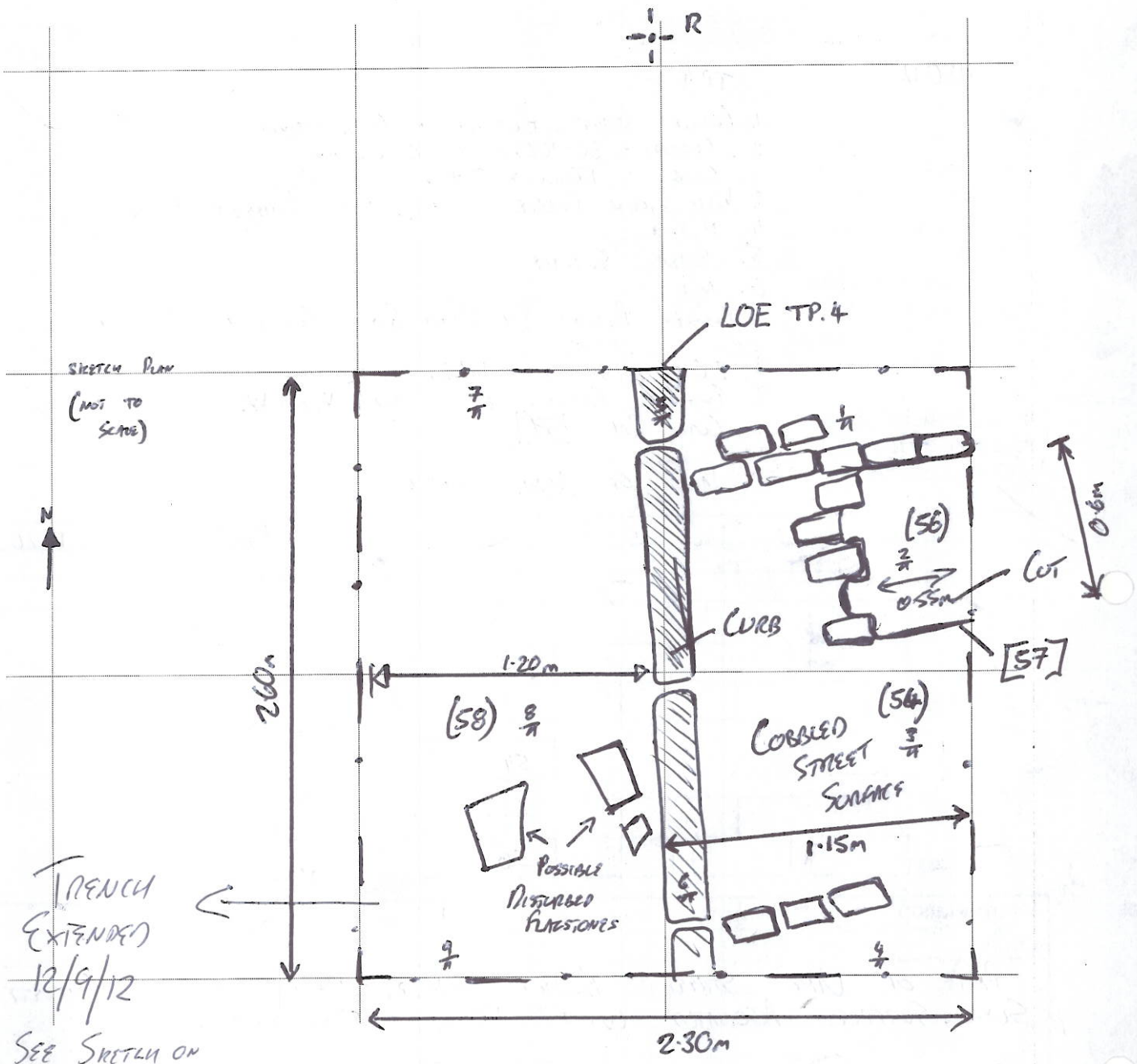
Site Code: MND 12	Grid Square: TP 4	Context Type: MASONRY	Context Number: 54
1. Materials	1. COBBLE STREET SURFACE + CURB STONES		
2. Size of materials (brick: BTL in mm)	2. COBBLES - 80-100mm x 150-250mm CURB - 150mm x 0.95m		
3. Finish of stones	3. WELL WORN COBBLE SURFACE, FACED LIMESTONE CURB		
4. Coursing / bond	4. N/A.		
5. Form	5. STREET SURFACE		
6. Direction of face(s)	6. N/A.		
7. Bonding material (brick: Height of four courses & 4 bed joints in m)	7. COBBLES BOUND BY HARD GREY CONCRETE MORTAR		
8. Dimensions of masonry as found	8. 2.65m N-S x 1.15m E-W		
9. Other comments	9. EXTENDS BEYOND LOC TO N, E + W. Cut BY [57]		
	PART OF VINE STREET.		
	HIGHEST LEVEL : 13.26 m		



Interpretation:
PART OF VINE STREET BOUND UNDER MAKE UP AND CONCRETE SLAB SURFACE ASSOCIATED WITH 1960's CONSTRUCTION.
SIMILAR COBBLED SURFACE VISIBLE TO NORTH UNDER RAILWAY VIADUCT.
WELL WORN COBBLED STREET WITH LIMESTONE CURB. PART OF VINE STREET, WOULD HAVE LINKED THE CROSSING TO THE CIRCUS. POSSIBLY COBBLED STREET OR MORE LIKELY VICTORIAN REMAINS OF STREET AFTER SEWERS ARE PUT IN.
Context same as :

Sample No(s):	Drawing No(s): PS (x 1)
Photo No(s):	Sketch/levels overleaf: <input checked="" type="checkbox"/> Transferred to plan: <input checked="" type="checkbox"/>

Compiled by: DE	Date: 4-9-12	Checked by: cm 21/9/12	Tick when entered in database: <input type="checkbox"/>
---------------------------	------------------------	----------------------------------	---



SKETCH PLAN
(NOT TO SCALE)

TRENCH
EXTENDED
12/9/12
SEE SKETCH ON
SHEET (130)

LEVELS ON
SHEET (56)

DISTANCE
Q-R = 6.38m